

13th KANAZAWA UNIVERSITY
WPI-NanoLSI

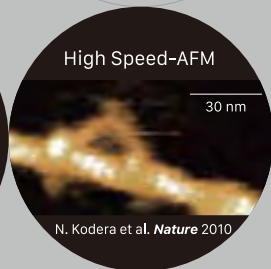
Bio-SPM SUMMER SCHOOL 2025



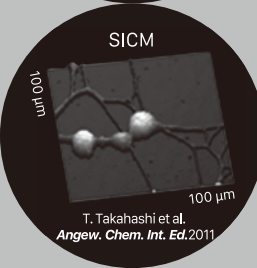
You can learn how the world's most advanced Bio-SPMs work and how to operate them, and experience the observation of standard samples and your own brought-in material.



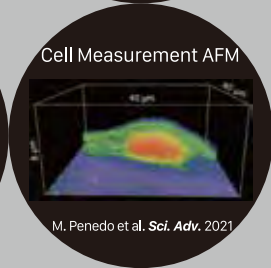
Atomic resolution/
3D-AFM



High Speed-AFM



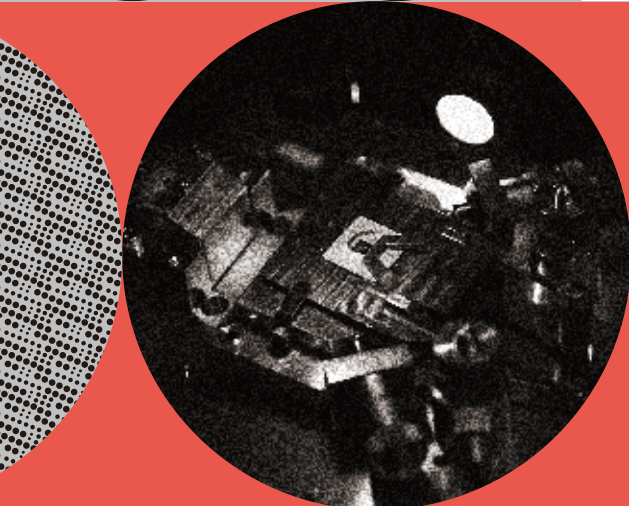
SICM



Cell Measurement AFM

Mon., Aug. 25 - Fri., 29
2025

Free of charge Participation Capacity approx. 20 persons



Subject

young researchers and students
interested in observing your own samples with cutting-edge Bio-SPM.

Venue

Kakuma Campus, Kanazawa University

Bio-SPMs

- Atomic Resolution/3D-AFM
- High-Speed AFM
- Scanning Ion Conductance Microscopy
- AFM for Cell Measurement

Application
Deadline

Thu., May 15, 2025

<https://nanolsi.kanazawa-u.ac.jp/research/applications/summerschool>

Nano Life Science Institute, Kanazawa University.

