

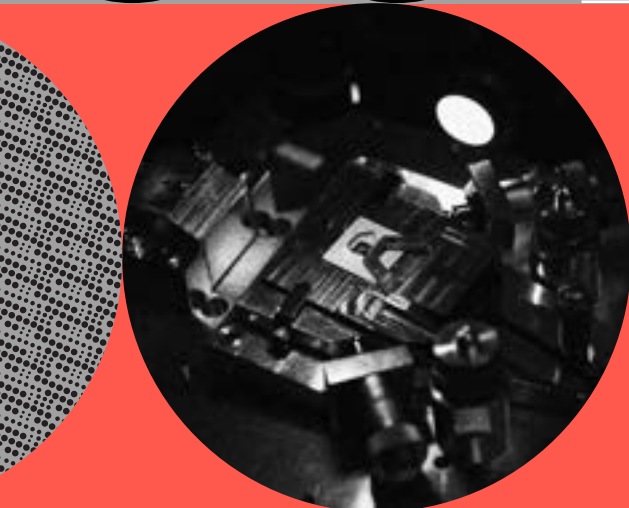
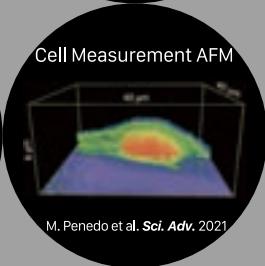
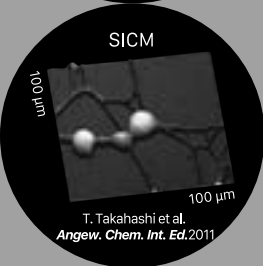
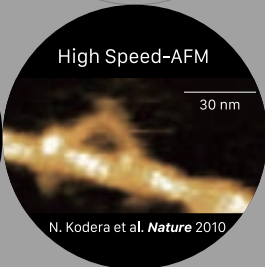
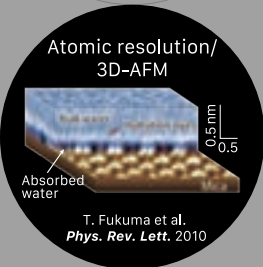
12th KANAZAWA UNIVERSITY  
WPI-NanoLSI

# Bio-SPM SUMMER SCHOOL 2024

You can learn how the world's most advanced Bio-SPMs work and how to operate them, and experience the observation of standard samples and your own brought-in material.

Mon., Aug. 5 - Sat., Aug. 10  
2024

Free of charge Participation Capacity approx. 20 persons



Subject young researchers and students  
interested in observing your own samples with cutting-edge Bio-SPM.

Venue Kakuma Campus, Kanazawa University

- Atomic Resolution/3D-AFM
- High-Speed AFM
- Scanning Ion Conductance Microscopy
- AFM for Cell Measurement

Application  
Deadline

Wed., May 15, 2024 Nano Life Science Institute, Kanazawa University.  
<https://nanolsi.kanazawa-u.ac.jp/research/applications/summerschool>

